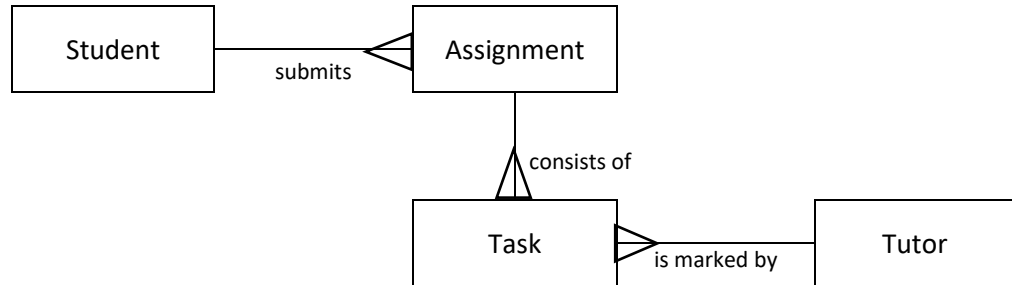


## Exercise 2 – Cardinality

1. Consider the entity relationship diagram shown below.



- (a) State the cardinality of the relationship between the Student and Assignment entities.

---

- (b) State the cardinality of the relationship between the Assignment and Task entities.

---

- (c) State the cardinality of the relationship between the Task and Tutor entities.

---

- (d) Describe each relationship in the entity relationship diagram.

---

---

2. Consider the entities MOVIE, ACTOR and DIRECTOR.

- (a) Write down at least 4 attributes that would be stored in each entity.

---

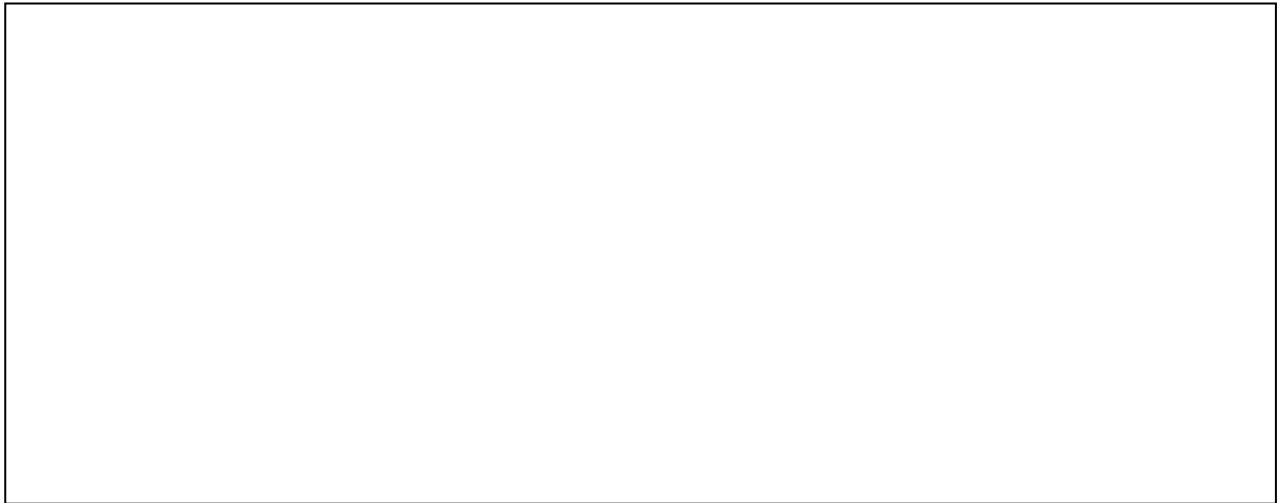
- (b) State the cardinality of the relationship between the MOVIE and ACTOR entities.

---

- (c) State the cardinality of the relationship between the MOVIE and DIRECTOR entities.

---

- (d) Draw an entity relationship diagram to illustrate the relationships between the MOVIE, ACTOR and DIRECTOR entities. Your diagram should show the entities, attributes and the relationships.



3. Consider the entities Continent, Country and City.

- (a) Write down at least 4 attributes that would be stored in each entity.

---

- (b) State the cardinality of the relationship between the Continent and Country entities.

---

- (c) State the cardinality of the relationship between the Country and City entities.

---

- (d) Draw an entity relationship diagram to illustrate the relationships between the Continent, Country and City entities. Your diagram should show only the entities and the relationships.

